



# A POP OF COLOR

BY HILLARY CLOUD

PHOTOS BY MATT CORNELIUS

**HOMEOWNERS**

Kate and Trent Chambers

**LOCATION**

Rochelle District in the Texarkana, Texas Historic Neighborhood

**YEAR BUILT**

1950

**SIZE**

Approximately 2,000 square feet

**LOT SIZE**

.34 acre

**SPLURGE**

Dining Room Chandelier

The Chambers' beautiful blue house with its vibrant, yellow front door adds a pop of color to the street much like the family adds a pop of color to their historic Texarkana neighborhood. Kate and Trent have chosen to stay in their beloved historic neighborhood and make their house a home. They contemplated selling or staying but could not stand the thought of leaving, so they settled on a whole house remodel. They have achieved an aesthetic and functionality that serves their family and reflects their eclectic taste and style.

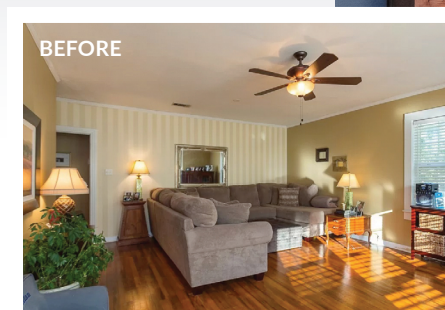
Although most of the house received a facelift, Kate has balanced the new with heirloom pieces she showcases in various rooms. The dining room table was a piece of her parents,

paired with her renovation 'splurge,' a beautiful chandelier that her husband grew to love. "Trent could not understand why I was obsessed," Kate said. "And then we had it hung, and now it is his favorite part of the room." The back wall leading into the kitchen matches the outside of the house, a nod to the navy with romantic details that make it a feature.

Their kitchen is centered around a custom, oversized butcher block island. "I love being able to cook, help the boys with homework, and talk with Trent, all in one space," Kate said. The two steps leading to the couch create a comfy nook. She jokes that it serves as the designated shoe step, works really well when there are many people in there, and is the unintentional stadium seating behind the couch. Unique features such

**WALL COLOR**  
Sherwin Williams  
Naval

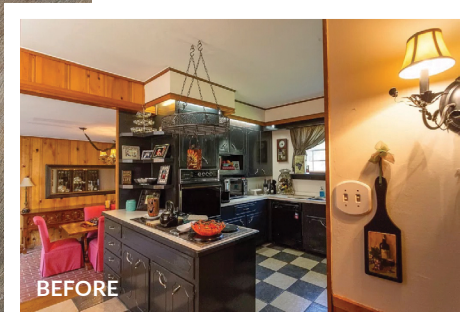
The former formal living room now functions as a dining room equipped with Kate's antiques, a "splurge" light fixture, and a naval blue accent wall. Kate's dream was to keep this room neutral so that she could decorate for holidays, including Christmas when she puts up five trees.







During the renovation, the Chambers prioritized opening up the kitchen to create room for cooking and family activities. They included a large cutting board island and a distinct backsplash to portray a farmhouse aesthetic.



WISHES HE'D RENTED A PAINT SPRAYER

WISHES SHE'D PICKED BENJAMIN MOORE NATURAL LINEN



TACKLE YOUR NEXT HOME DIY PROJECT WITH THE HELP OF DOT'S RENTALS AND DOT'S ACE HARDWARE.

### RENT IT

Instead of buying big ticket items for your next weekend project, rent them from Dot's Rentals & Sales!

- Tile Saw • Hand Trowel • Circular Saw
- Nail Gun • Drill • Pressure Washer
- Paint Sprayer • Extension Ladder
- Tiller • and more!



814 N. Robison Rd. • Texarkana, TX  
(903) 792-7011 • dotsrentals.com

### BUY IT

Then, stock up on home improvement supplies from your favorite brands at Dot's Ace Hardware.

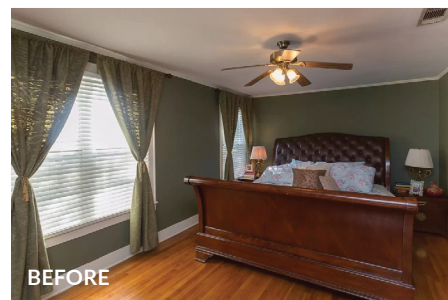
- Benjamin Moore Paint • Craftsman
- DeWalt • Black & Decker
- Painting Supplies • Cleaning Supplies
- Lawn & Garden • And more!



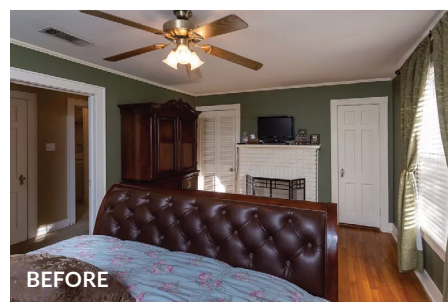
3411 Richmond Rd. • Texarkana, TX  
(903) 838-0059 • dotsacehardware.com







The primary bedroom was transformed by replacing the olive green walls with the home's signature naval blue paint. The fireplace was recovered in the kitchen's signature tile, adding texture and pattern to the room. Mid-century modern furniture and floral bedding complement the space.



# Village Communities of Texarkana, Texas Is Coming Soon



Getty Images

A "home" is different things to different people in various stages of their lives. It might be:

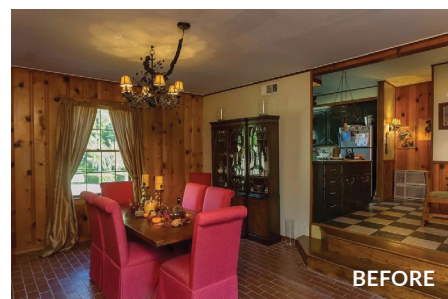
- family
- a safe place
- a community
- a happy place to raise a family
- the flexibility of renting
- the investment in homeownership
- downsizing for the next season of life



Whatever home means to you and your family, something special is coming to Texarkana that could help you and your family achieve your dream home. It's called Village Communities of Texarkana, Texas, and it's being developed with you in mind.

Be sure to watch [vcofft.org](http://vcofft.org) for details as they are released.

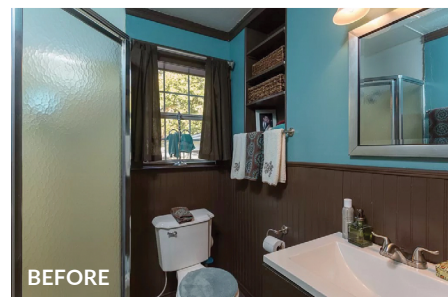




BEFORE

The dark, wood-paneled dining room was replaced with a comfortable, classic family room. Although both rooms function as a place for gathering, the new family room provides a place for friends and family to watch movies and play games.

The boys' bathroom underwent a dramatic transition in color and style. Updating the dark paint and dated fixtures, including upgrading to a barn-style sink, made all the difference in this small, functional space.



BEFORE



COMMUNITY & CULTURE



The P.R.I.D.E. Program places police officers as coaches with students of the Texarkana Arkansas School District to be lifelong mentors.

The students are taught decision-making skills, coping techniques, enhanced self-esteem, and anger management. Each year, during the P.R.I.D.E Academy the students complete at least two community service projects. The students are gaining school and community pride while bonding with police officers to build positive lasting relationships and a more positive view of law enforcement.

Thank you to TAPD!







**EXTERIOR COLOR**  
Sherwin Williams  
Naval



Transformed from a white exterior to a fresh coat of Sherwin Williams Naval, the Chambers' home stands out on the street. The front door, painted Sherwin Williams Lemon Twist, adds a pop of character and charm to the already cozy home.

**DOOR COLOR**  
Sherwin Williams  
Lemon Twist



as the steps, split backdoor, and the original paneling is thoughtfully paired with the furniture. Kate laughed and admitted, "This is Ikea and Wayfair. It is great for us since we can take off the covers, throw them in the wash because you know... boys." This home is packed with the perfect amount of character.

Choosing to renovate their beloved home, built in 1950, was a process and took an eager amount of collaboration. Kate explained how she was more inclined to neutrals and blacks when choosing color. "The older I have gotten, the more I have toned down on colors. I am drawn to neutrals because you can decorate with pops of color, change it seasonally, and they go so much further."

Kate grew up in the historic district. It was important to the couple to raise their children in the same neighborhood. "It is one of those places where I can borrow sugar or eggs from a neighbor," Kate said. "I know all of them, and they know us. I love living here. This is where we wanted to raise our family." The Chambers' investment in this old neighborhood is one of the many reasons the historic district is unique and a lovely collection of families. 📍

# Contact Us for **EASY** Pre-Approval



**JADE EVANS**

Texarkana Mortgage Originator  
NMLS #938197  
Jade.Evans@MyFarmers.Bank



Apply with Jade Here



Apply with Kim Here

**KIM HOLCOMB**

Texarkana Mortgage Originator  
NMLS #483830  
Kim.Holcomb@MyFarmers.Bank

The Farmers Bank & Trust mortgage team can get you an estimate quickly, giving you more options and helping you buy with confidence. With a mortgage loan from **Farmers Bank & Trust**, you get:

- No hidden fees
- Local underwriting, processing and decision making
- Construction loan options from interim to permanent financing

2900 St. Michael Drive • Texarkana, TX 75503 • (903) 255-1820

**MyFarmers.Bank**

MEMBER FDIC

